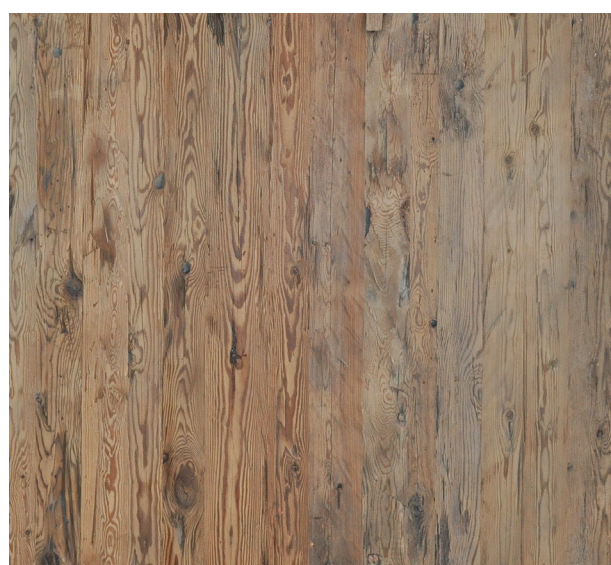
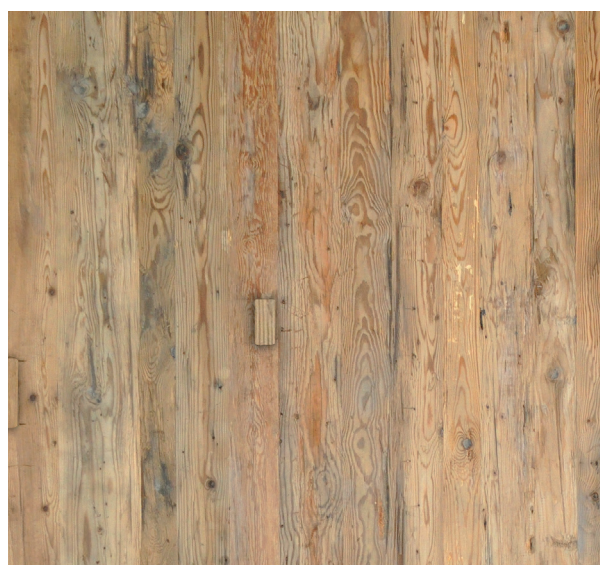


# RECLAIMED WOOD HACKED H4

**AH H4:** Original, old wood with a surface full of character, sound and black knots possible, resin pockets possible; worm holes, shakes, nail holes, mechanical damages and contrasting colour variations are a valued feature. Joints on the short ends are possible. Lamellas are jointfree placed.  
**Bottom layer CG:** Spruce steamed, no special quality specifications.  
**Surface:** The panel is produced from originally hacked wooden beams.



Grading	Thickness mm app.	Length mm (Width 2030 mm)	Top layer thickness mm	Top layer width mm	Middle layer	Packaging pack./palett
AH/CG (suitable for sauna use)	22	1800 - 3900 (subject to availability)	8	Mix	BML or SML-Spruce (subject to availability)	25

**Panels are glued SWP/2 NS (non structural):** solid wood panels for non-structural use in wet areas, with regard to appropriate constructional protection also suitable for exterior use (sheltered areas).  
**Legend:** SML = strip core, BML = board middle layer.  
More information concerning fire classification in the accompanying information to CE-marking.

Technical information					
More information (for example concerning fire classification) in the accompanying information to CE-marking at <a href="http://www.admonter.eu/en/downloads">http://www.admonter.eu/en/downloads</a>					
Type of wood	Thickness (mm)	Middle layer	Weight [kg/m²]	Moisture content [%]	Lambda [W/m K]
Recl. Wood hacked H4	22	Spruce	10,4	7+/-2	0,12

The photos show the range of possible colours.  
You can find more detailed information at: [admonter.at](http://admonter.at)

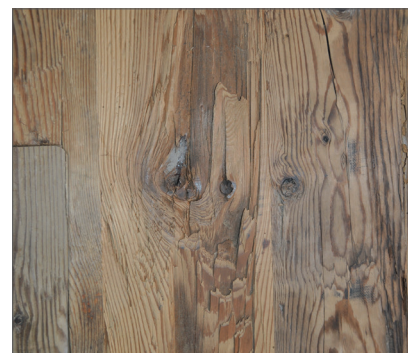
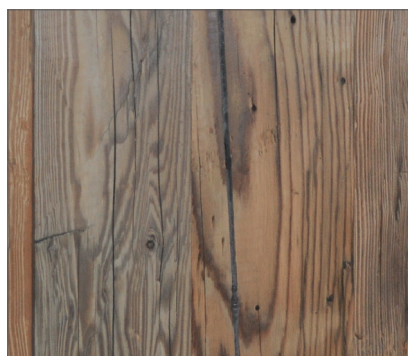
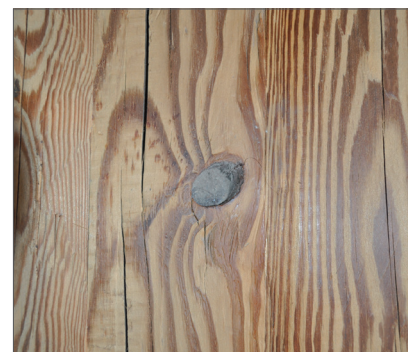
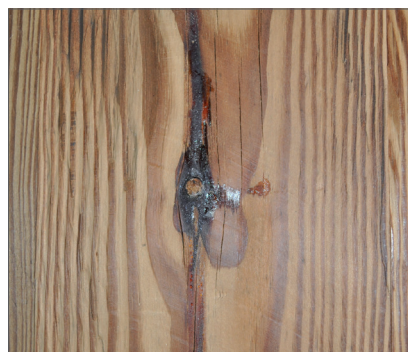




## CHARACTERISTICS RECLAIMED WOOD HACKED H4

### ELEMENTS

The above picture shows an example of the natural character of the wood, this will vary in every panel. Variations in colour and grain patterns are natural and inevitable. A picture is never a substitute for the "real thing". For this reason we recommend a visit to your nearest Admonter dealer. He will be pleased to show you samples.



The photos show the range of possible colours.



You can find more detailed information at: [admonter.at](http://admonter.at)