

# Object report Hotels



Visions in wood.  
*Touching nature.*



**FLOOR<sup>S</sup>**  
Naturholzböden

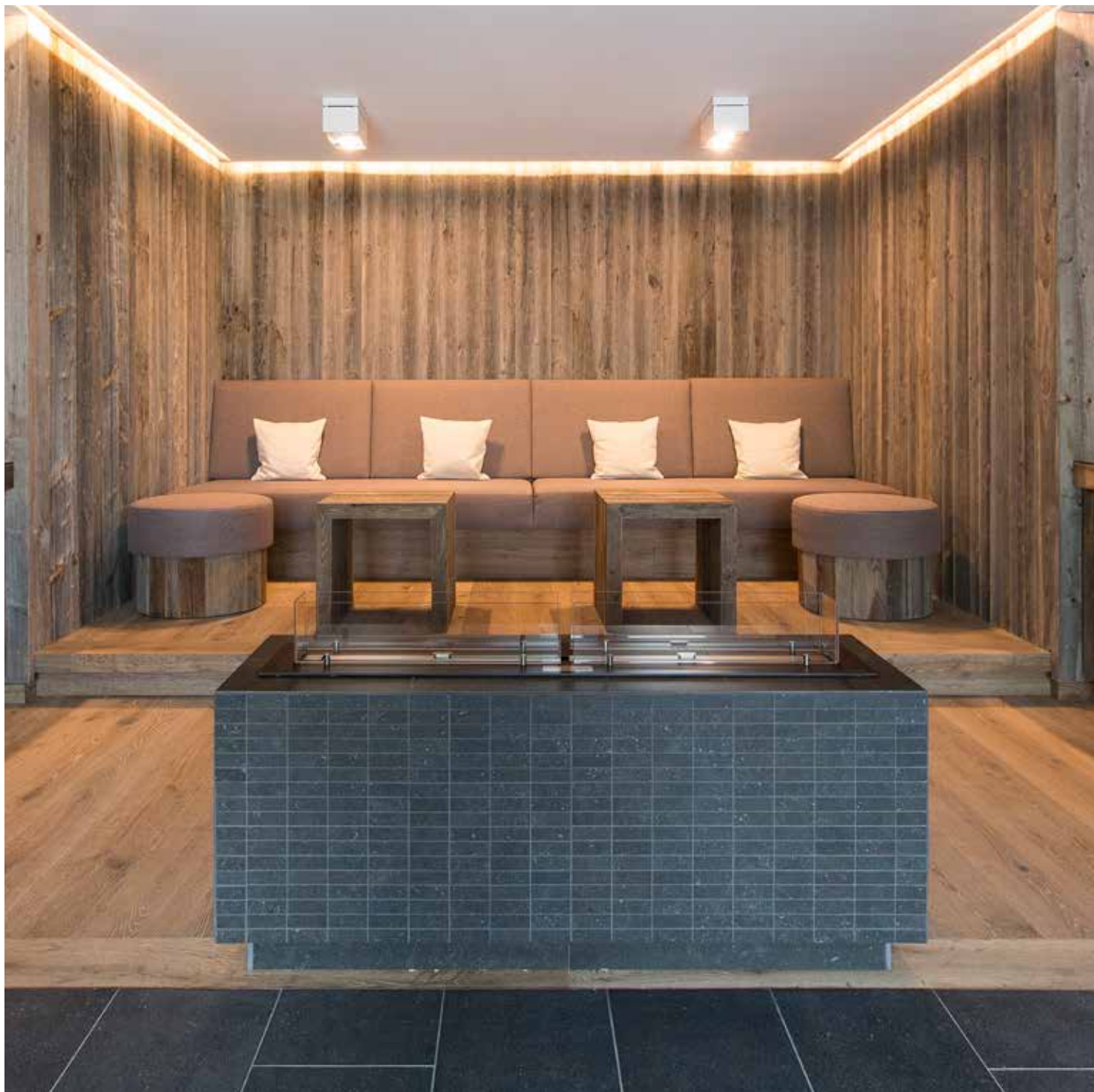
**ELEMENT<sup>S</sup>**  
Naturholzplatten

**DOOR<sup>S</sup>**  
Naturholztüren

**STAIR<sup>S</sup>**  
Naturholzstiegen

**ACOUSTIC<sup>S</sup>**  
Naturholz-Akustikplatten





# Hotel Graseck

*FLOORS:* Oak Enas soaped  
*ELEMENTS:* Reclaimed wood  
sunbaked grey

*Country:* Germany

*Architect:* Sylvia & Vincens Weingart  
[www.das-graseck.de](http://www.das-graseck.de)







## Hotel Graseck

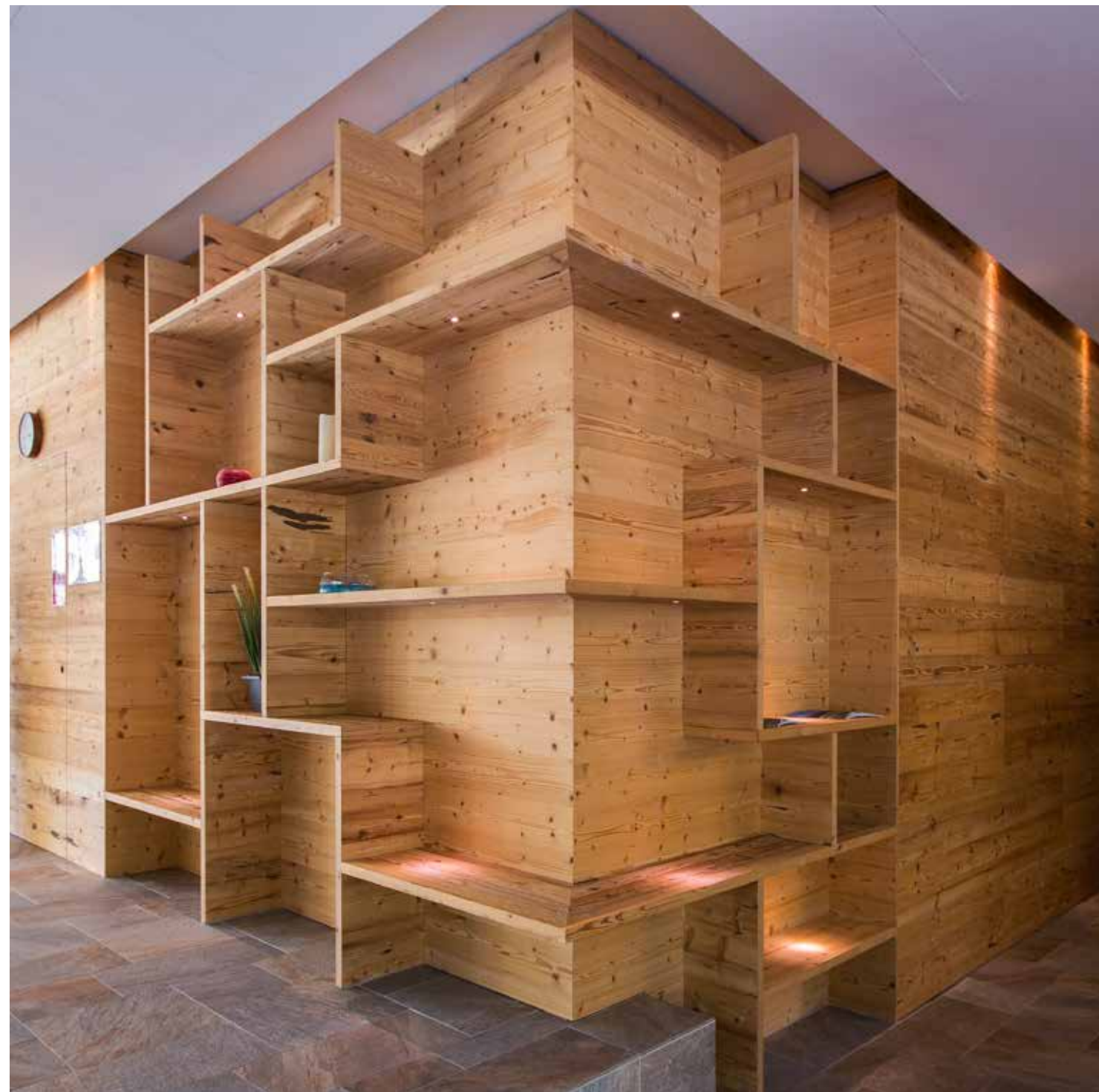
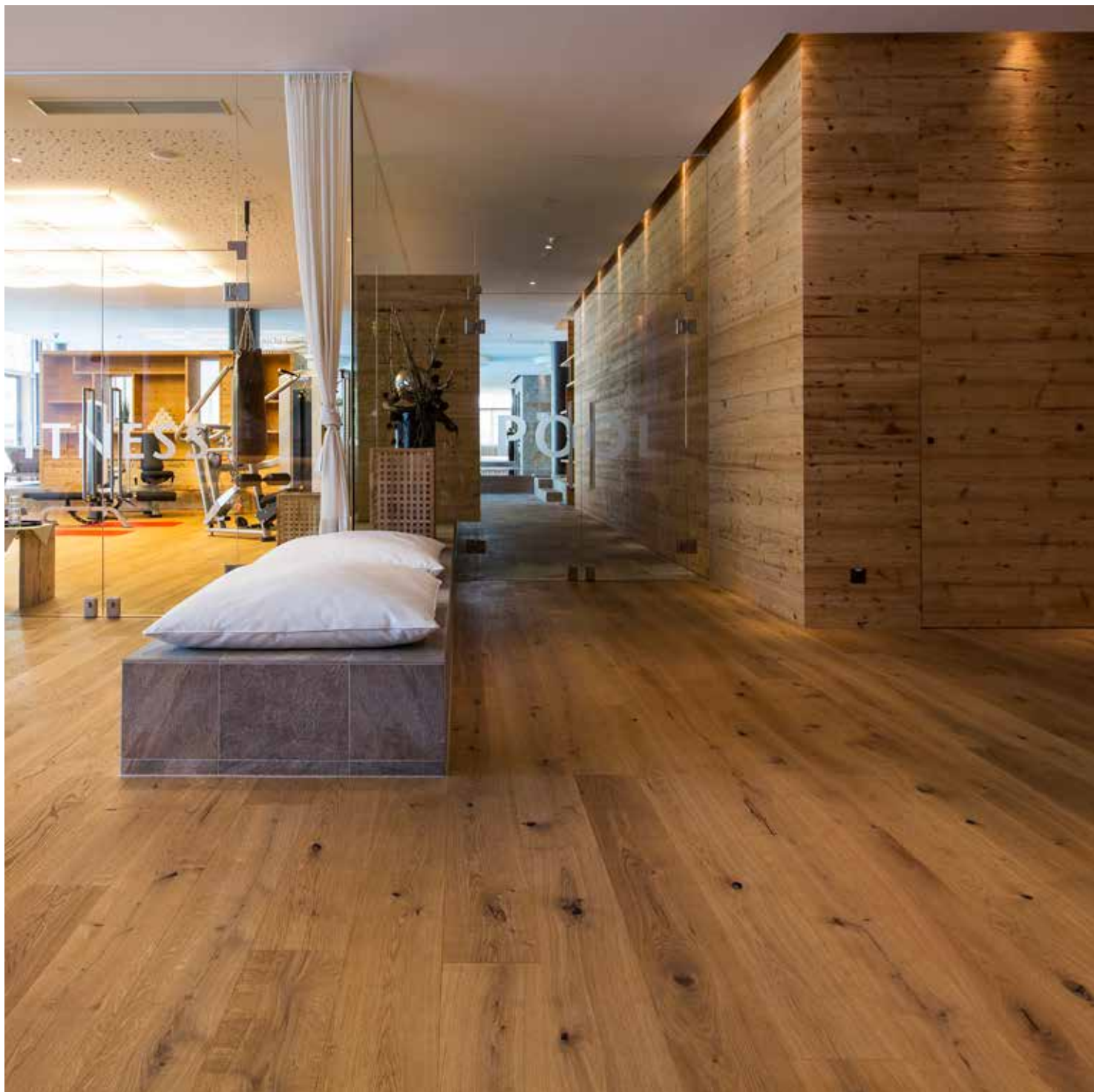
**FLOORS & ELEMENTS:** Oak white rustic brushed natural oiled  
Oak Lapis basic brushed natural oiled

**Country:** Germany

**Architect:** Sylvia & Vincens Weingart  
[www.das-graseck.de](http://www.das-graseck.de)







## Hotel Falkensteiner

*FLOORS:* Oak superrustic  
brushed natural oiled  
*ELEMENTS:* Reclaimed wood  
hacked H1  
*Country:* Austria  
*Architect:* Arkan Zeytinoglu







## Hotel Falkensteiner

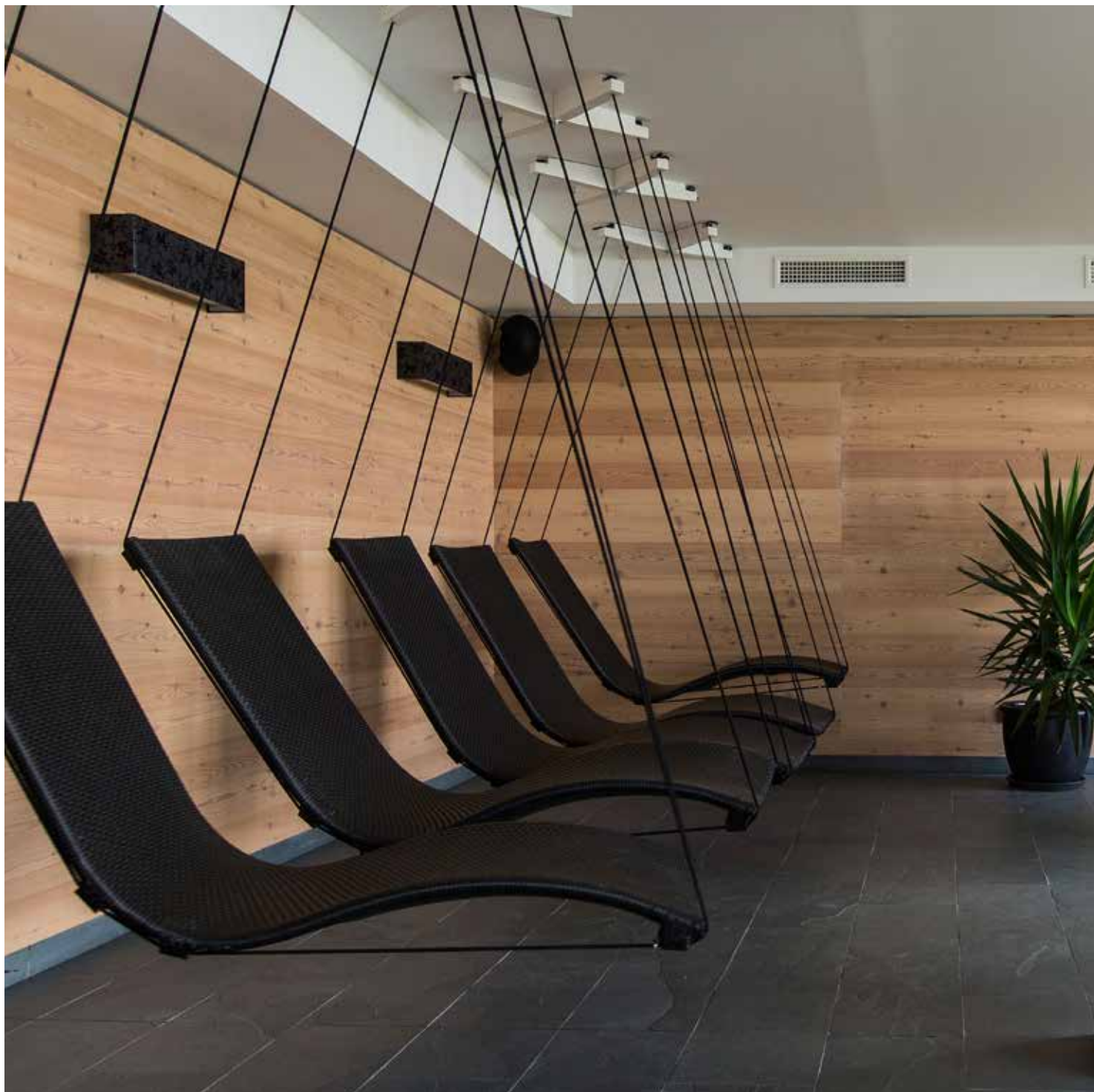
*FLOORS:* Oak superrustic  
brushed natural oiled

*ELEMENTS:* Reclaimed wood  
hacked H1

*Country:* Austria

*Architect:* Arkan Zeytinoglu





## Alpinhotel Pacheiner

*FLOORS:* Larch white basic  
brushed natural oiled  
*ELEMENTS:* Stone Pine white  
*Country:* Austria  
*Architect:* Ronacher ZT GmbH







## Alpinhotel Pacheiner

*FLOORS:* Larch white basic  
brushed natural oiled

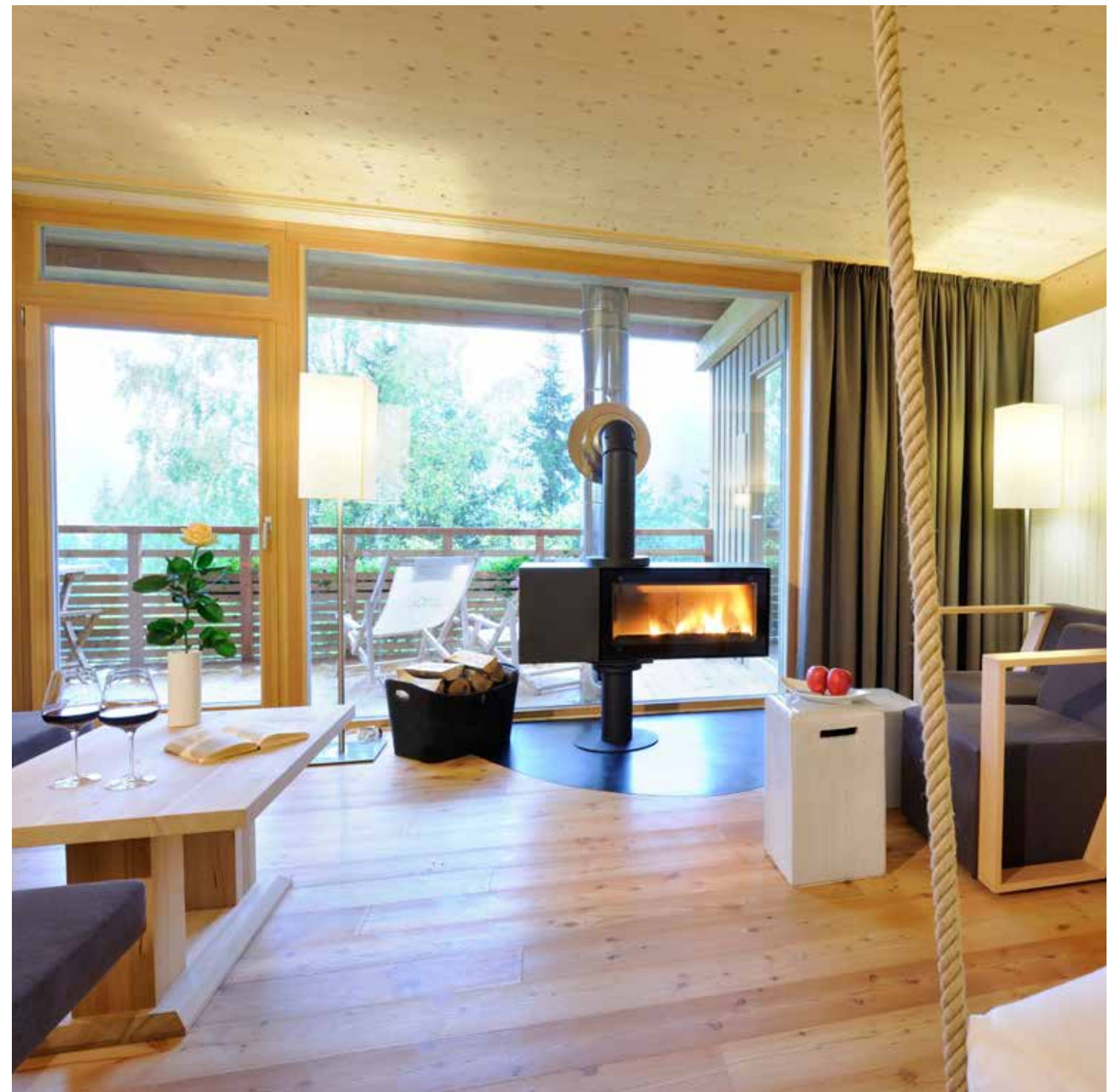
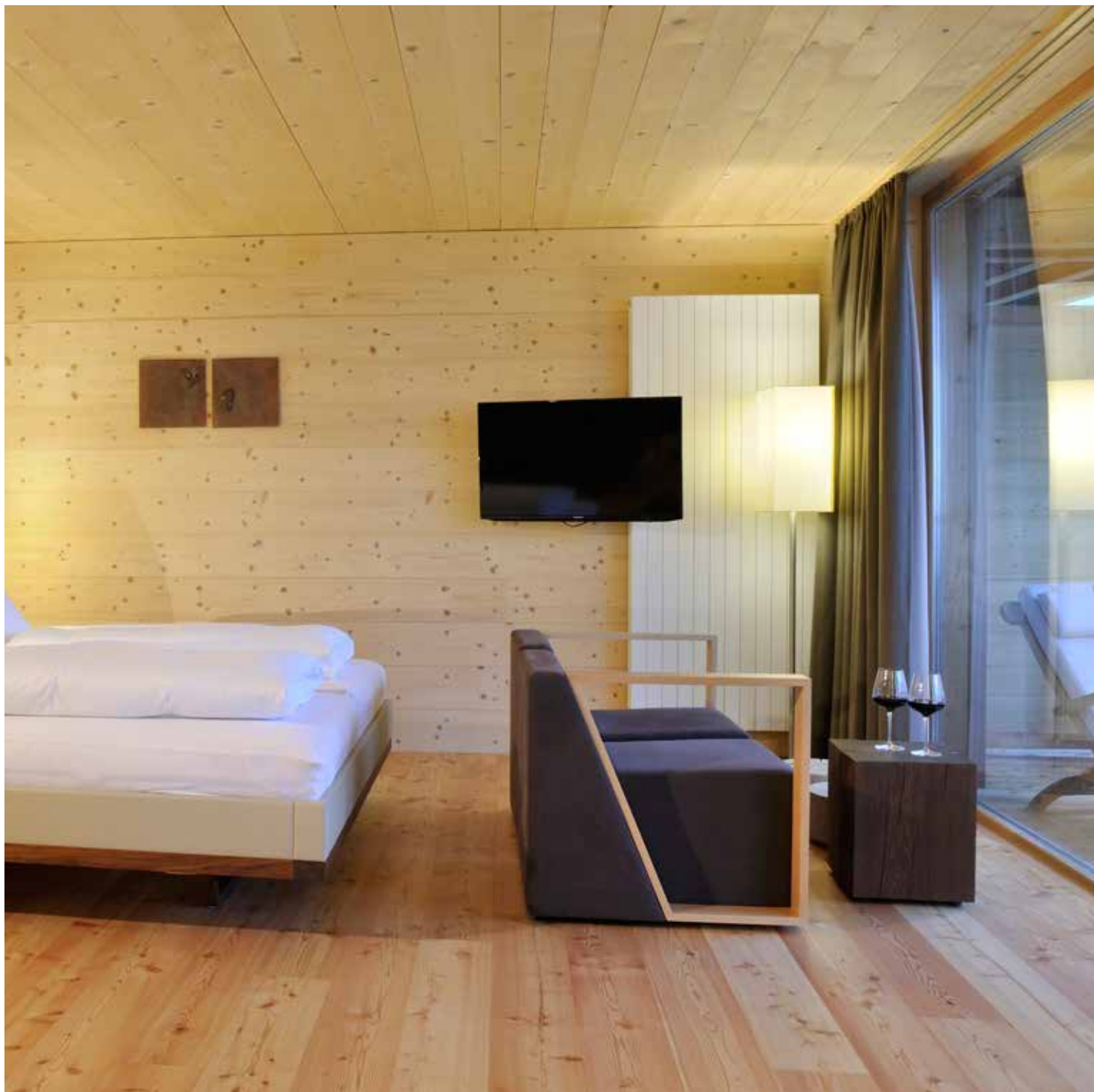
*ELEMENTS:* Stone Pine white

*Country:* Austria

*Architect:* Ronacher ZT GmbH







## Woodhotel Forsthofalm

*FLOORS:* Larch basic  
brushed natural oiled

*Country:* Austria

*Architect:* W2 Manufaktur  
[www.forsthofalm.com](http://www.forsthofalm.com)

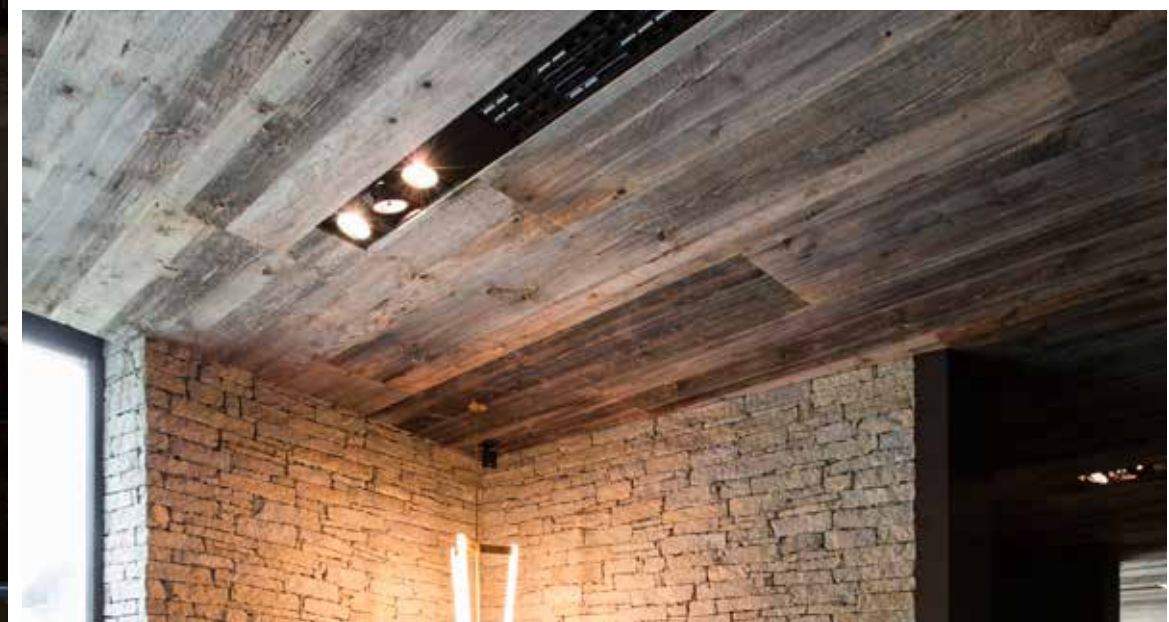




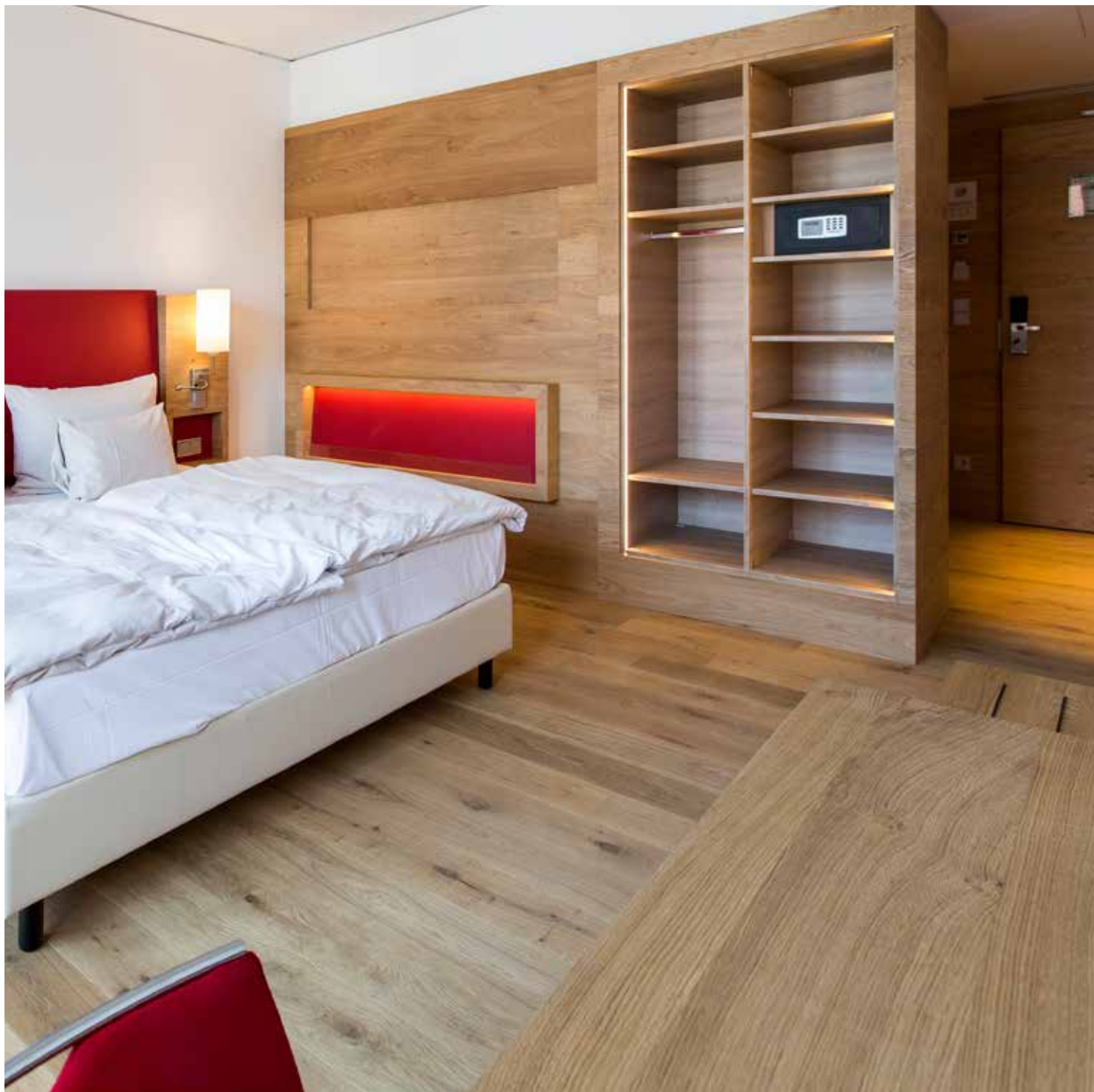


## Hotel Zhero

*ELEMENTs:* Reclaimed wood  
sunbaked  
*Country:* Austria  
*Architect:* EWRE Interior  
Jens Liebhauser





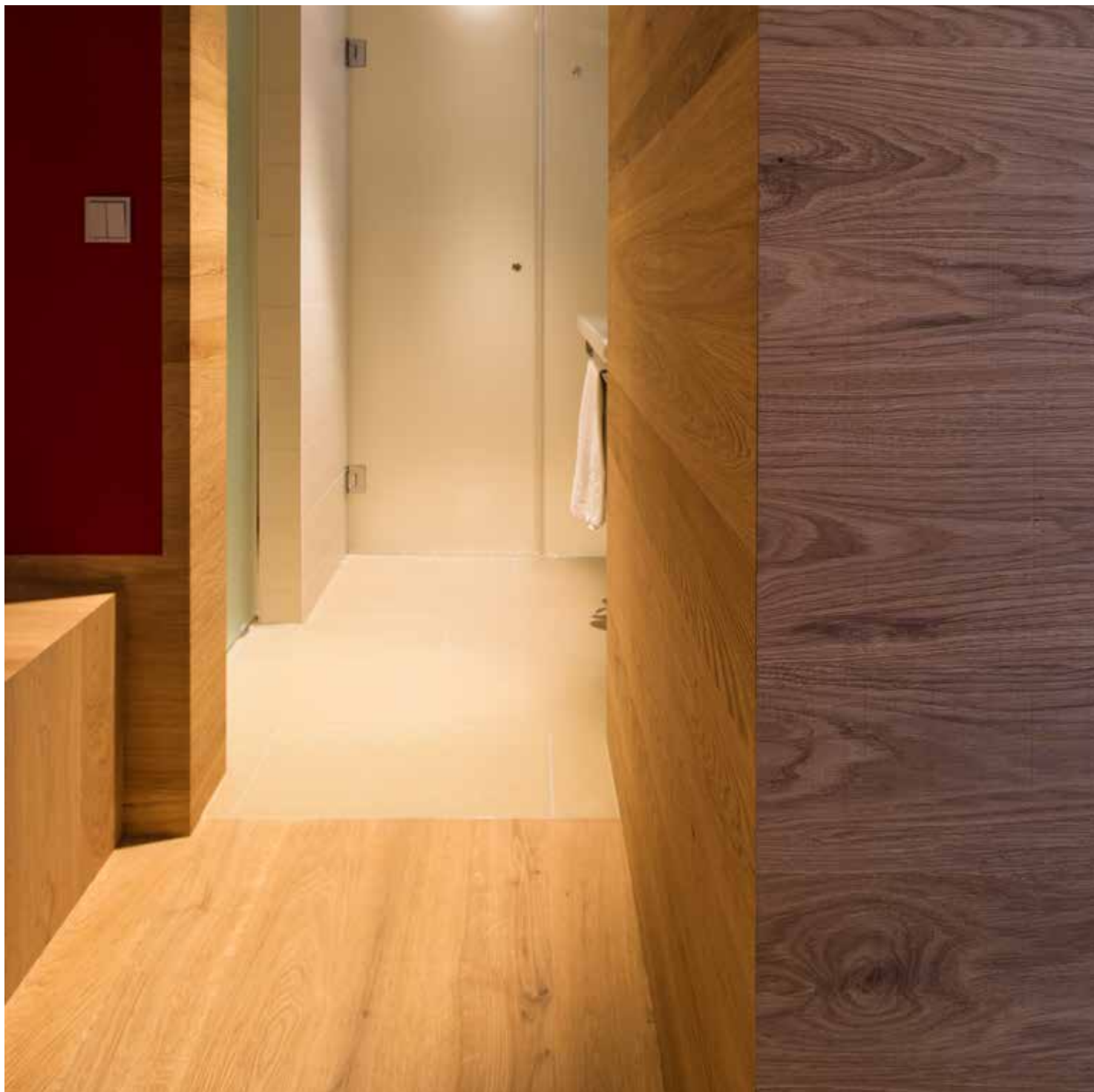


## Hotel Asam

**FLOORS:** Oak naturelle  
brushed natural oiled  
**ELEMENTS:** Oak brushed  
**Country:** Germany  
**Architect:** bast + ascherl  
Architecten &  
Fischer Alfred  
WPA Projektdesign



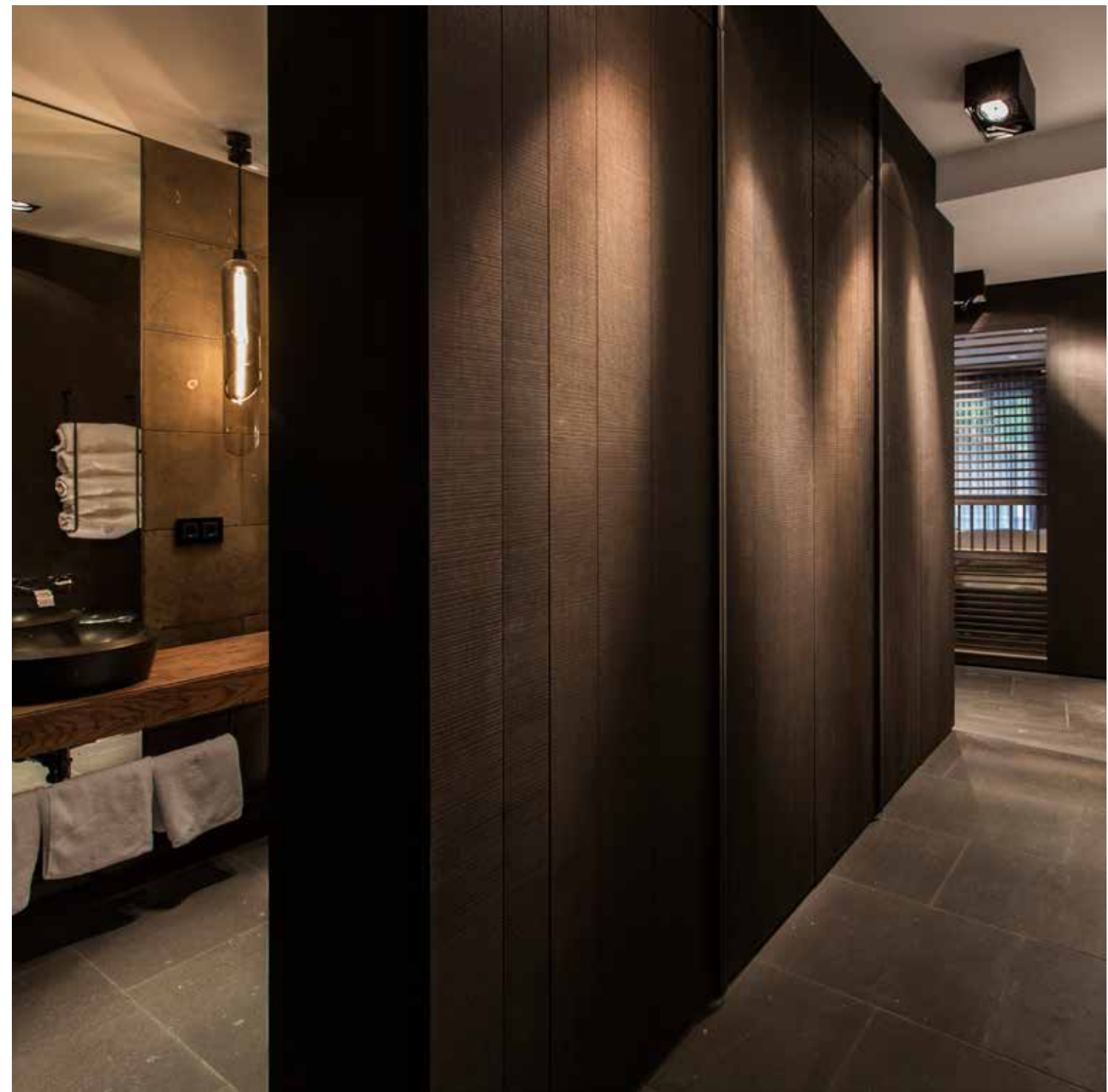
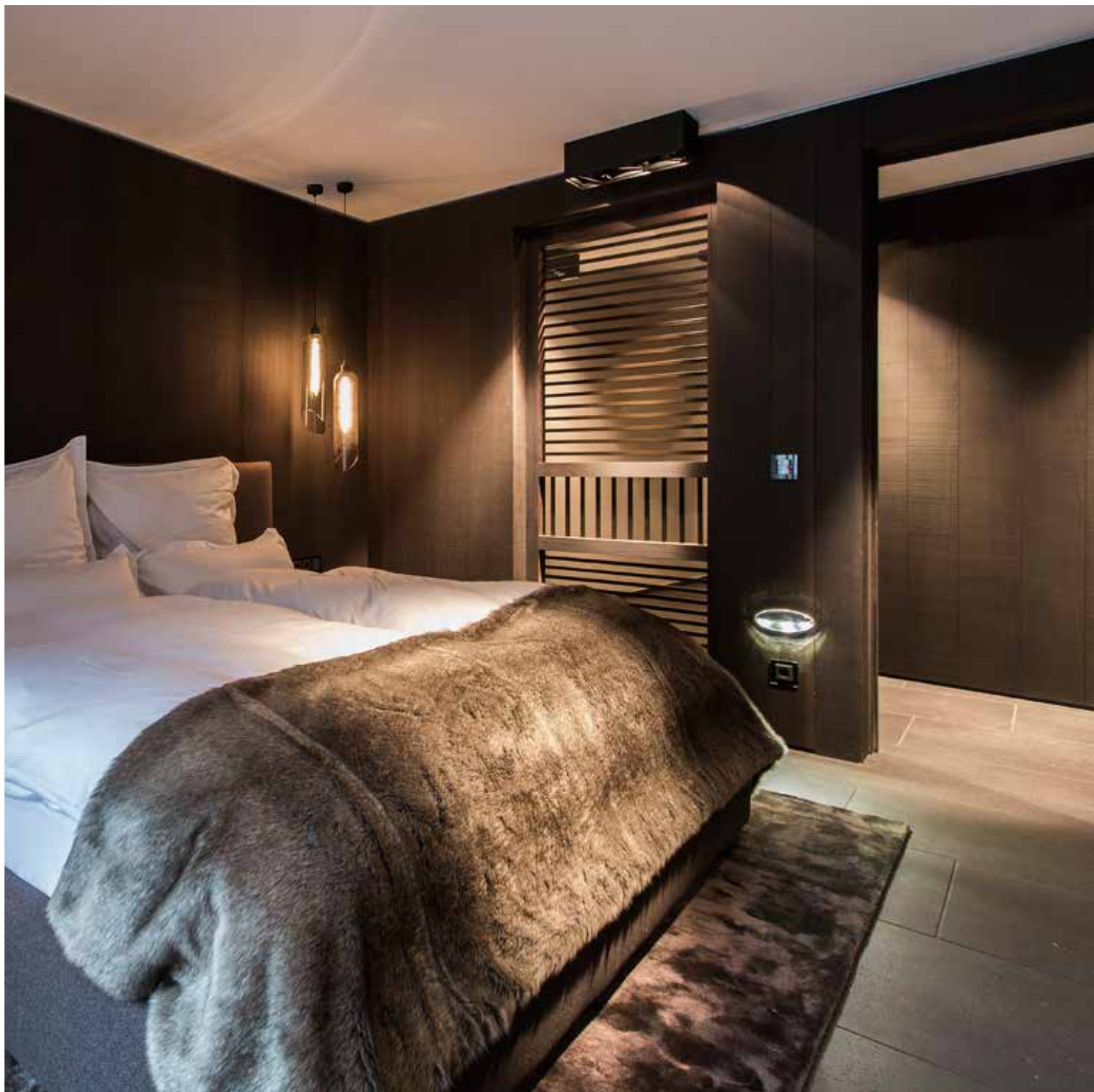




## Hotel Asam

**FLOORS:** Oak naturelle  
brushed natural oiled  
**ELEMENTS:** Oak brushed  
**Country:** Germany  
**Architect:** bast + ascherl  
Architecten &  
Fischer Alfred  
WPA Projektdesign





## Chalet Mathon

*ELEMENTs:* Oak dark rough sawn  
*Country:* Austria  
*Architect:* EWRE Interior  
Jens Liebhauser







## Chalet Mathon

*ELEMENTS:* Oak dark rough sawn

*Country:* Austria

*Architect:* EWRE Interior  
Jens Liebhauser





## Kinderhotel Oberjoch

*FLOORS:* Oak extra rustic  
- special color  
brushed natural oiled

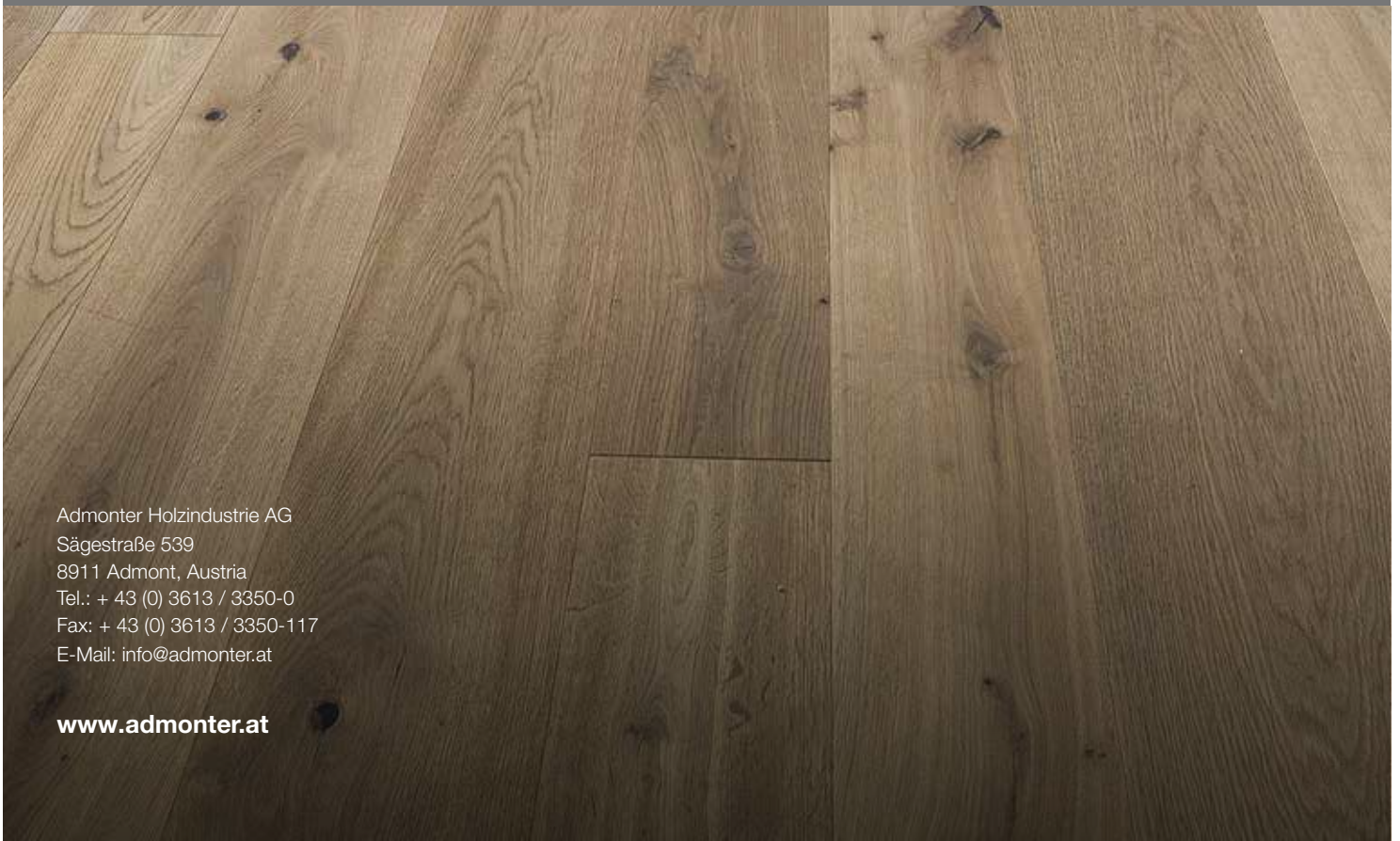
*Country:* Germany

*Architect:* Dipl.-Ing. (FH) Martin Zint





FLOOR<sup>S</sup> ELEMENT<sup>S</sup> DOOR<sup>S</sup> STAIR<sup>S</sup> ACOUSTIC<sup>S</sup>



Admonter Holzindustrie AG  
Sägestraße 539  
8911 Admont, Austria  
Tel.: + 43 (0) 3613 / 3350-0  
Fax: + 43 (0) 3613 / 3350-117  
E-Mail: info@admonter.at

[www.admonter.at](http://www.admonter.at)