

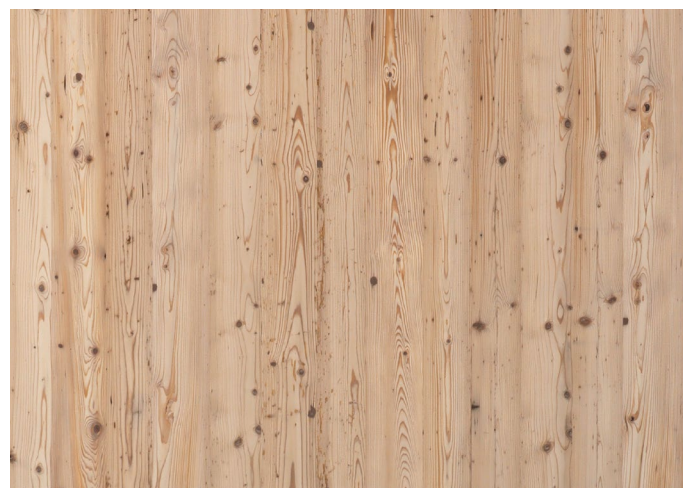
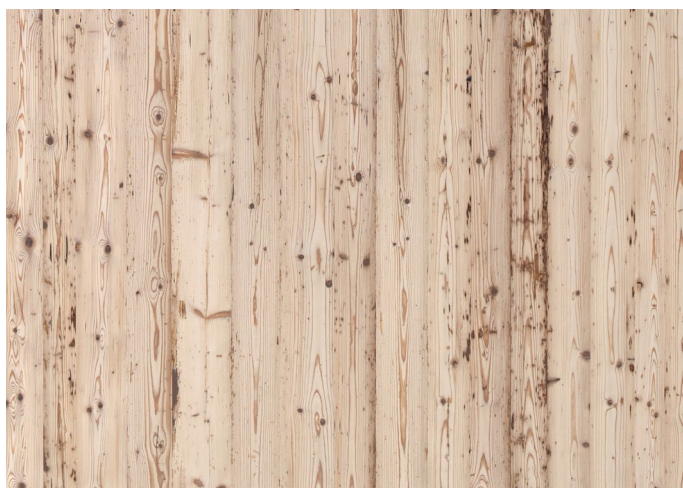
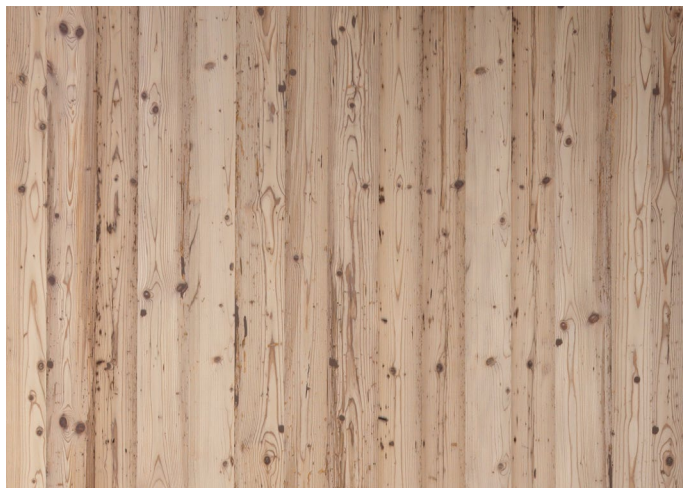


AHW: Original, old wood with a surface full of character, sound and black knots possible; big knot holes are filled with end grain knot plugs, smaller ones are filled with brown filler. Resin pockets, shakes, nail holes, bark pockets and mechanical damages possible. Colour variations and worm holes are a valued feature. Lamellas are joint free placed.

Surface: Only brushed.

Bottom layer AHW: as above.

Bottom layer CG: Spruce steamed, no special quality specification.



Grading	Thickness mm approx.	Length in mm (W. 2030 mm)	Top layer Thickness mm ca.	Top layer width mm	Middle layer	Packaging pack./palett
AHW/CG+ (suitable for sauna use)	19	1800-4500 (subject to availability)	5	Mix	BML or SML-Spruce (subject to availability)	25
AHW/AHW	42	2100/2500	5	Mix	Spruce 5-layer	10

Panels are glued SWP/2 NS (non structural): solid wood panels for non-structural use in wet areas, with regard to appropriate constructional protection also suitable for exterior use (sheltered areas). Legend: SML = strip core, BML = board middle layer. More information concerning fire classification in the accompanying information to CE-marking.

Technical information

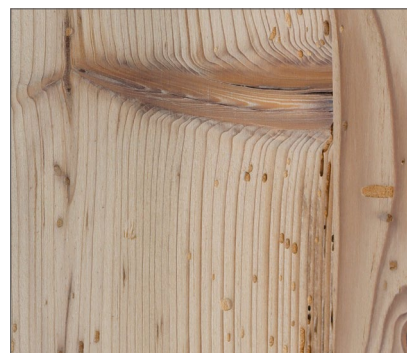
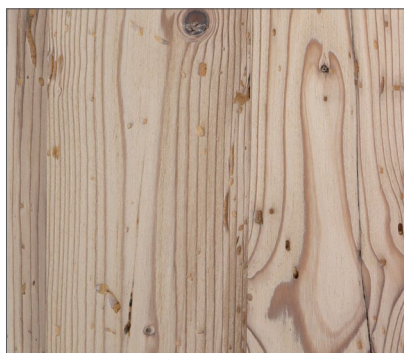
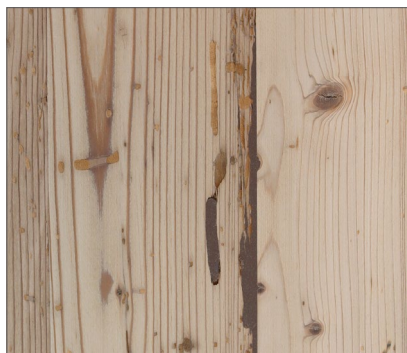
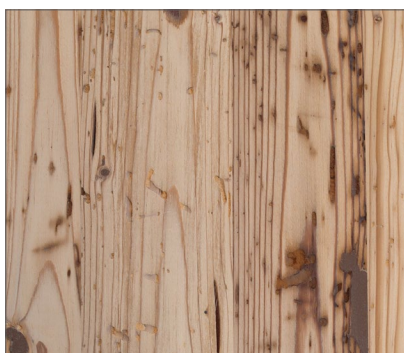
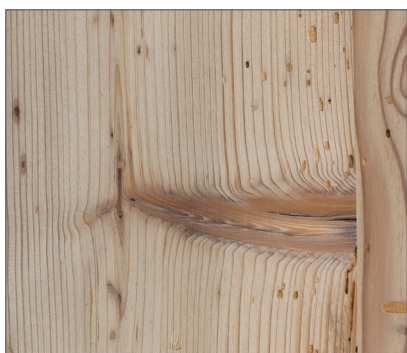
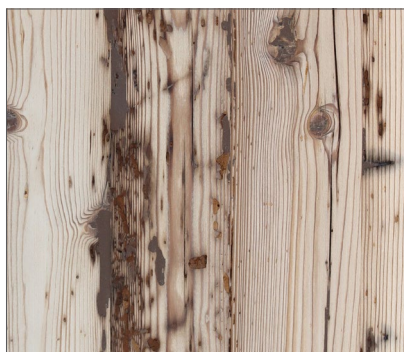
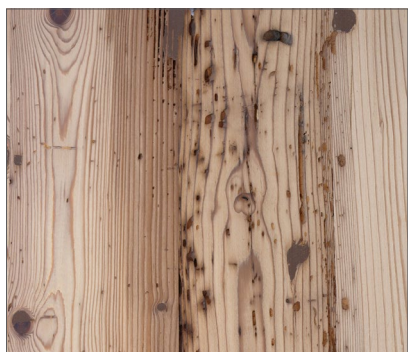
More information (for example concerning fire classification) in the accompanying information to CE-marking at <https://admonter.com/en/downloads/>

Type of wood	Thickn. (mm)	Middle layer	Weigth [kg/m²]	Moisture content [%]	Lambda [W/m K]
Altholz	19	Fichte	8,9	8+/-2	0,12
	42	Fichte	19,7	8+/-2	0,12

The illustration shows an exemplary appearance. The typical wood characteristics vary from board to board. Deviations in colour and wood structure are natural and unavoidable. For further information, please contact your Admonter representative.



Natural Wood Panels
Elements



admonter.com

SENTINEL HAUS
INSTITUT
Building directory healthier buildings

AUSTRIA

EPD
Environmental Product Declaration
EPD 12323 and 121234

PEFC
Programme for the Endorsement of the Control

CE

The illustration shows an exemplary appearance. The typical wood characteristics vary from board to board. Deviations in colour and wood structure are natural and unavoidable. For further information, please contact your Admonter representative.

Natural Wood Floors
Floors

Natural Wood Panels
Elements

Natural Acoustic Panels
Acoustics

Natural Wood Stairs
Stairs

Natural Wood Doors
Doors